

# MONTHLY MEMBERSHIP PROGRESS REPORT

LOCATION AUSTRALIA

District 201W1

Results as of: 1/31/2023

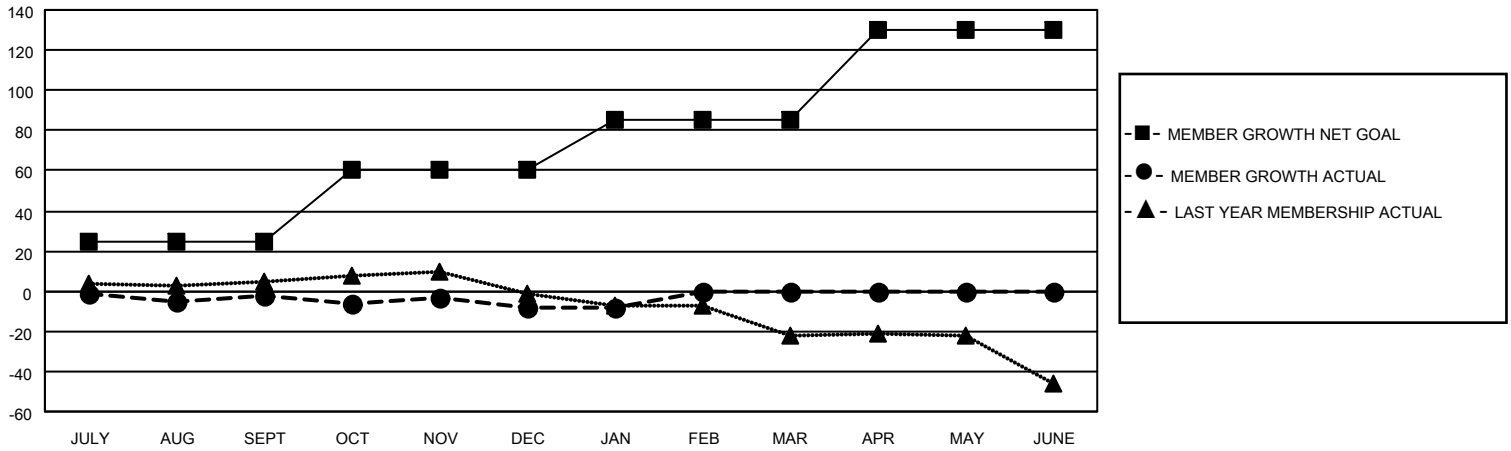
Clubs			
RESULTS FOR 2022-2023			
QUARTER	NEW CLUB GOAL	NEW CLUBS	DROPPED CLUBS
JULY/AUG/SEPT	0	0	1
OCT/NOV/DEC	0	0	0
JAN/FEB/MAR	0	0	0
APR/MAY/JUNE	1	0	0

Members			
RESULTS FOR 2022-2023			
QUARTER	MEMBER GROWTH NET GOAL	MEMBER GROWTH ACTUAL	DROPPED MEMBERS ACTUAL (including transfers)
JULY/AUG/SEPT	25	13	13
OCT/NOV/DEC	35	15	18
JAN/FEB/MAR	25	4	1
APR/MAY/JUNE	45	0	0

**GOALS AND ACTUAL NEW CLUBS CUMULATIVE**



**GOALS AND ACTUAL MEMBERS CUMULATIVE**



DROPPED CLUBS: 1	
<b>DROPPED MEMBERS</b>	
DECEASED	1
CLUB CANCELLED	0
OTHER	31
<b>TOTAL</b>	<b>32</b>

12 CLUBS OF 38 ADDED 1 OR MORE NEW MEMBERS

[CLICK HERE FOR CUMULATIVE MEMBERSHIP DATA](#)

<u>GENDER DISTRIBUTION</u>	
MALE	298 (54.78%)
FEMALE	246 (45.22%)
NON BINARY	0 (0.00%)
PREFER NOT TO ANSWER	0 (0.00%)
<b>TOTAL FAMILY UNIT MEMBERS</b>	
	<b>104</b>
<b>FAMILY MEMBERS PAYING HALF DUES</b>	
	<b>55</b>